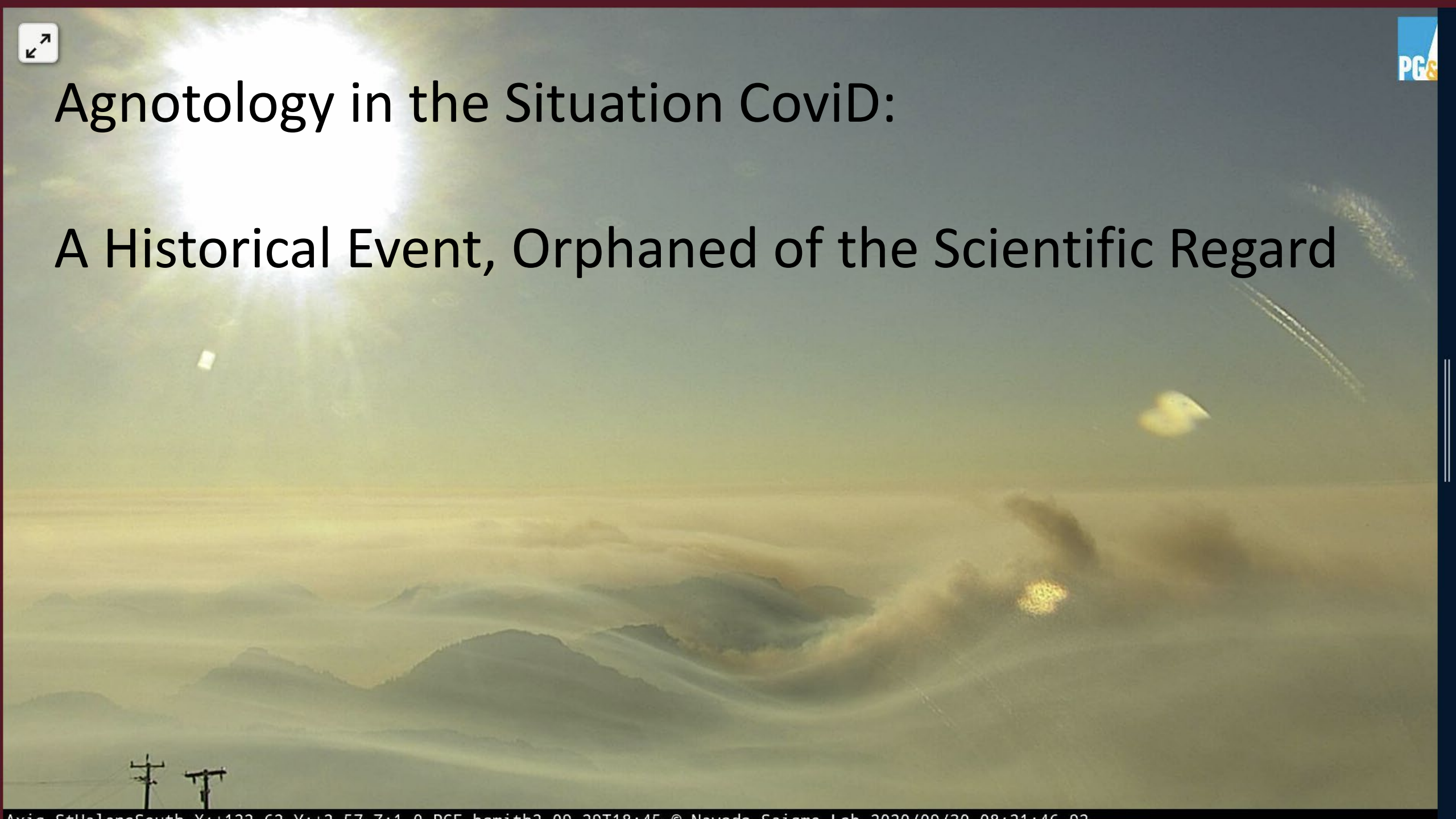






Agnotology in the Situation CoviD:

A Historical Event, Orphaned of the Scientific Regard



Agnotology in the Situation CoviD:

A Historical Event, Orphaned of the Scientific Regard

Ignacio Chapela.

Dept of Environmental Science, Policy and Management,
University of California, Berkeley.

The Scientific Regard

SCIENCE:

Sustained, Collective, Critical Enquiry

—Iain Boal

The Scientific Regard

SCIENCE:

Sustained, Collective, Critical Enquiry

—Iain Boal

ENSSER

European Network of Scientists for Social and Environmental Responsibility

Science that is

Context-sensitive,
Time- and Space- Relevant,
Responsive,
Responsible,
Discipline-aware, interdisciplinary.

Part I

The Scientist's View

Part I

The Scientists's Views

Agnotology

(Boal and Proctor, 1992)

A relatively new discipline: the systematic enquiry into what is **not** studied. Even more interestingly: the study of how (and why) ignorance is induced.

A very fruitful application of Agnotological analysis is the study of **the roads not taken, the questions not asked, the knowledge suppressed and the promises not kept.**

Agnotology

(Boal and Proctor, 1992)

A relatively new discipline: the systematic enquiry into what is **not** studied. Even more interestingly: the study of how (and why) ignorance is induced.

A very fruitful application of Agnotological analysis is the study of **the roads not taken, the questions not asked, the knowledge suppressed and the promises not kept.**



In ENSSER

An exercise not in giving answers
but in outlining

A Landscape of Enquiry.

A Taxonomy of Open Questions.

Part II

The Ecological View

S A R S – Cov -2

C o v i **D** - 19

S A R S – Cov - 2 (The Virus)

Relevant Measurements

Infection Rates \neq Incidence #

Reproduction Number “ R , R_t , R_0 ...”

Test with RT-PCR, LAMP, i.e. genomic amplification, or antibody tests against viral proteins.

C o v i D – 19 (The Disease)

Relevant Measurements

Medical statements.

Mortality/morbidity rates.

Immunity development.

Test with antibody tests against immune-response proteins.

Population Ecology and Evolution



Published: 04 January 2011

The good viruses: viral mutualistic symbioses

Marilyn J. Roossinck

Nature Reviews Microbiology **9**, 99–108(2011) | [Cite this article](#)

Published: 04 January 2011

The good viruses: viral mutualistic symbioses

Marilyn J. Roossinck

Nature Reviews Microbiology **9**, 99–108(2011) | [Cite this article](#)

Herd-Immunity vs Evolutionary Attenuation vs Universal Vaccination ??

Posted July 14, 2020.

The infection fatality rate of COVID-19 inferred from seroprevalence data

John Ioannidis

doi: <https://doi.org/10.1101/2020.05.13.20101253>

This article is a preprint and has not been peer-reviewed [what does this mean?]. It reports new medical research that has yet to be evaluated and so should *not* be used to guide clinical practice.



OPEN ACCESS

ESSAY

Why Most Published Research Findings Are False

John P. A. Ioannidis

Published: August 30, 2005 • <https://doi.org/10.1371/journal.pmed.0020124>

“...a research finding is less likely to be true

when the studies conducted in a field are smaller;
when effect sizes are smaller;
when there is a greater number and lesser preselection of tested relationships;
where there is greater flexibility in designs, definitions, outcomes, and analytical modes;
when there is **greater financial and other interest and prejudice**; and
when **more teams are involved in a scientific field in chase of statistical significance**.

Simulations show that for most study designs and settings, it is more likely for a research claim to be false than true.

Moreover, for many current scientific fields, claimed research findings may often be simply **accurate measures of the prevailing bias.**”

John Ioannidis, 2005

“...a research finding is less likely to be true

when the studies conducted in a field are smaller;

when effect sizes are smaller;

when there is a greater number and lesser preselection of tested relationships;

where there is greater flexibility in designs, definitions, outcomes, and analytical modes;

when there is **greater financial and other interest and prejudice**; and

when **more teams are involved in a scientific field in chase of statistical significance.**

Simulations show that for most study designs and settings, it is more likely for a research claim to be false than true.

Moreover, for many current scientific fields, claimed research findings may often be simply **accurate measures of the prevailing bias.**”

John Ioannidis, 2005

Part III

The Social Scientists' View

Disciplines Driving Policy/Story-Making

Virology

Molecular Biology

Mathematical modelling

Mechanistic/Industrialized
Medicine

Disciplines Left Behind (to our peril)

Agnotology

Sociology

Anthropology

Ecological Economics

Political Sciences

Evolution

Ecology

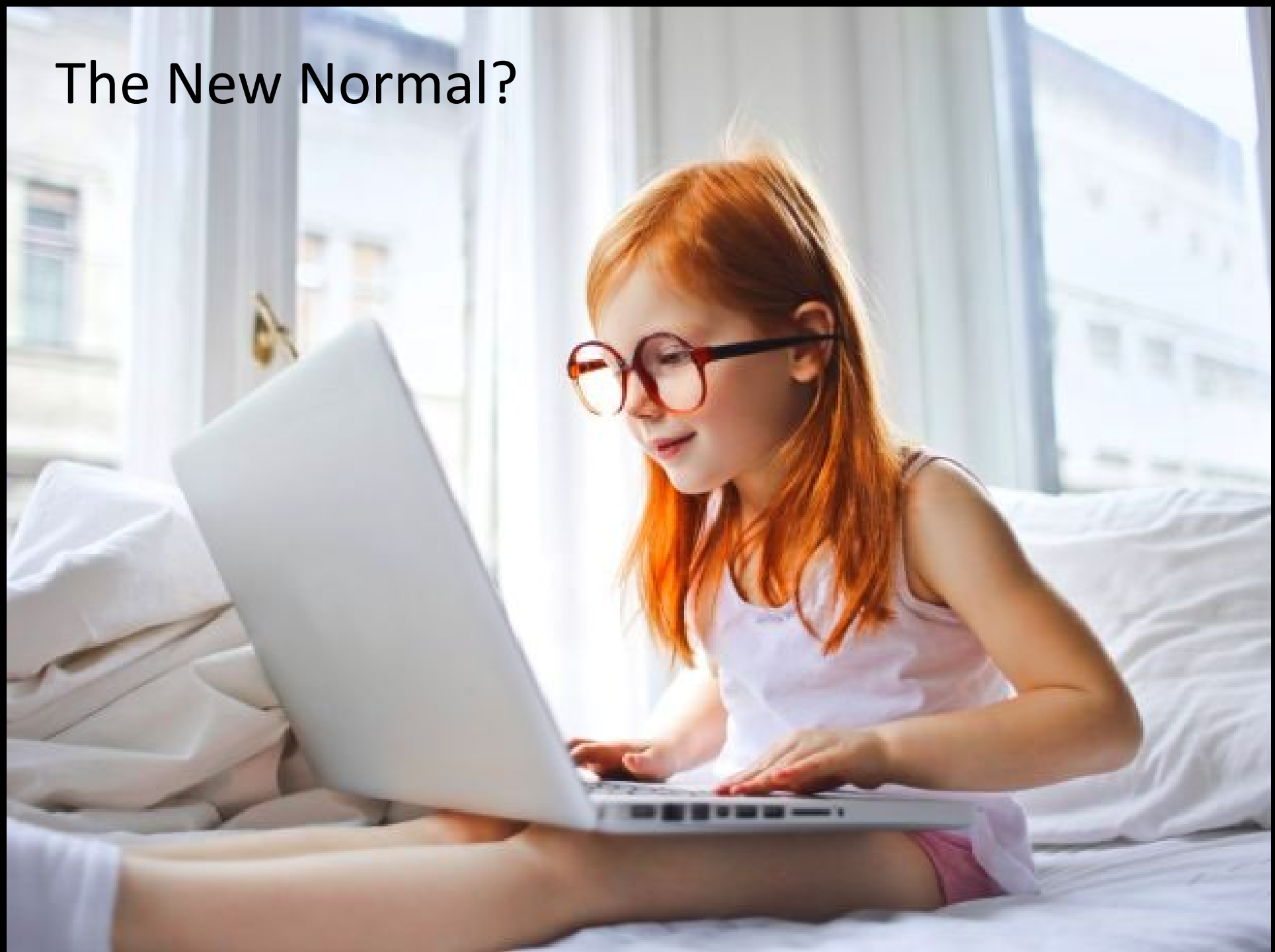
Education

History

Psychology

...and many more...

The New Normal?



CIVIL DEFENCE

WOMEN WANTED FOR EVACUATION SERVICE



OFFER YOUR SERVICES
TO YOUR LOCAL COUNCIL

ON ANY BRANCH OF WOMEN'S VOLUNTARY SERVICES

NATIONAL
SERVICE

Young people being evacuated out of Bristol, 1940

Imperial War Museum Archive



IWM



361ST COMPANY - C.C.C. CAMP #62 - MILROY, PA.

When the problem—whatever it may be—is viewed to demand a single Unified Command (cf. California's and Australia's megafires of 2020)...

More teams are involved in a scientific field in chase of statistical significance (Ioannidis)... and a single view to rule the world

→ Rule by Consensus, at best.

Dissent, even questioning and enquiry, must be suppressed at any cost

→ Rule by Technical Expertise (not by science).





When the problem—whatever it may be—is viewed to demand a single Unified Command (cf. California's and Australia's megafires of 2020)...

More teams are involved in a scientific field in chase of statistical significance (Ioannidis)... and a single view to rule the world

→ Rule by Consensus, at best.

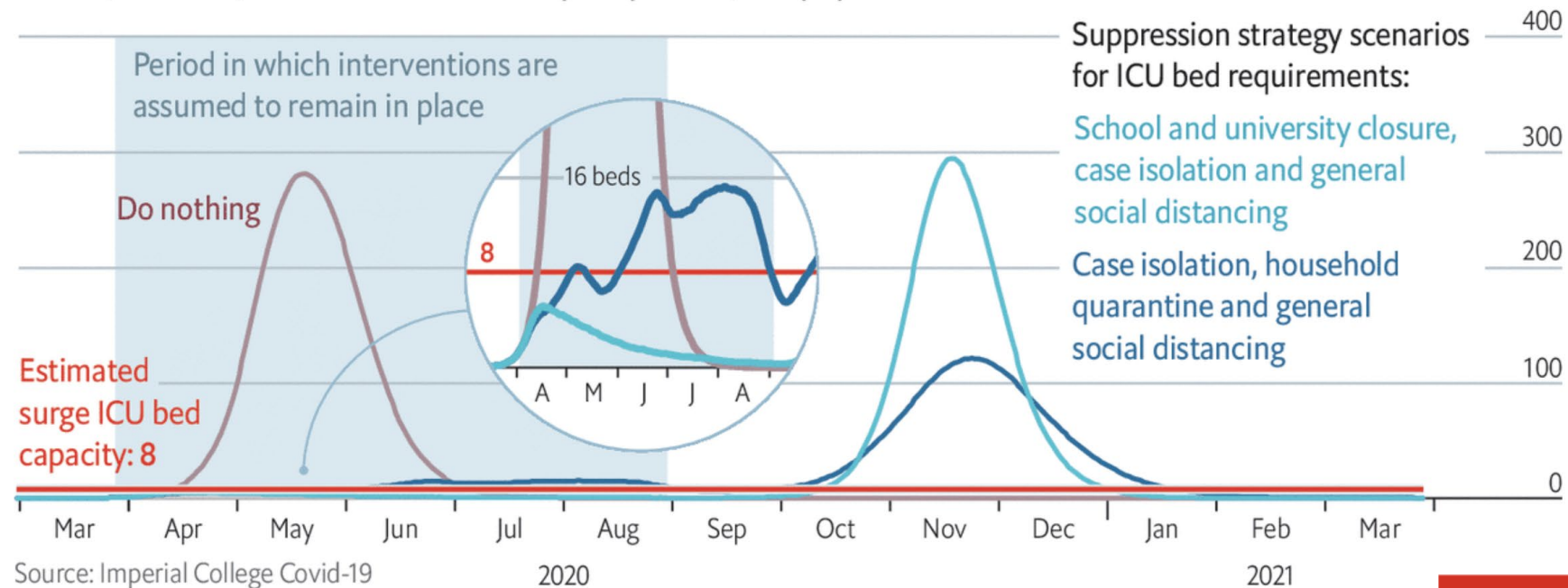
Dissent, even questioning and enquiry, must be suppressed at any cost

→ Rule by Technical Expertise (not by science).

The chart that changed the world • Schools go online • The global recession • India next?

Anticipating an encore

Britain, covid-19, critical-care beds occupied per 100,000 population



Source: Imperial College Covid-19 Response Team, March 16th 2020

The Economist

The
Economist

CORONAVIRUS MISINFORMATION:

Quantifying sources and themes in the COVID-19 'infodemic'

Sarah Evanega^{1,3}, Mark Lynas¹, Jordan Adams², Karinne Smolenyak²



¹ The Cornell Alliance for Science, Department of Global Development, Cornell University, Ithaca, NY

² Cision Global Insights, Ann Arbor, MI

^{*3} Corresponding author: snd2@cornell.edu

CORONAVIRUS MISINFORMATION:

Quantifying sources and themes
in the COVID-19 'infodemic'

Sarah Evanega^{1,3}, Mark Lynas¹, Jordan Adams², Karinne Smolenyak²



Who makes/is the Consensus? Who vets the expert?





Let's Claim Back
Science!

... and so we are left under the virologist's rule:
Isolated, disorganized, disoriented,
Hiding behind masks and closed doors
And behind an overwhelming fear of Death,
Waiting for a vaccine that may or may not come
That may or may not be available to each of us,
Descended from Olympian heights,
Yet, a vaccine that we all must take
Before we are allowed back
Into our lives.

Orphaned of the Regard of Science

A New Normal, it is called...

